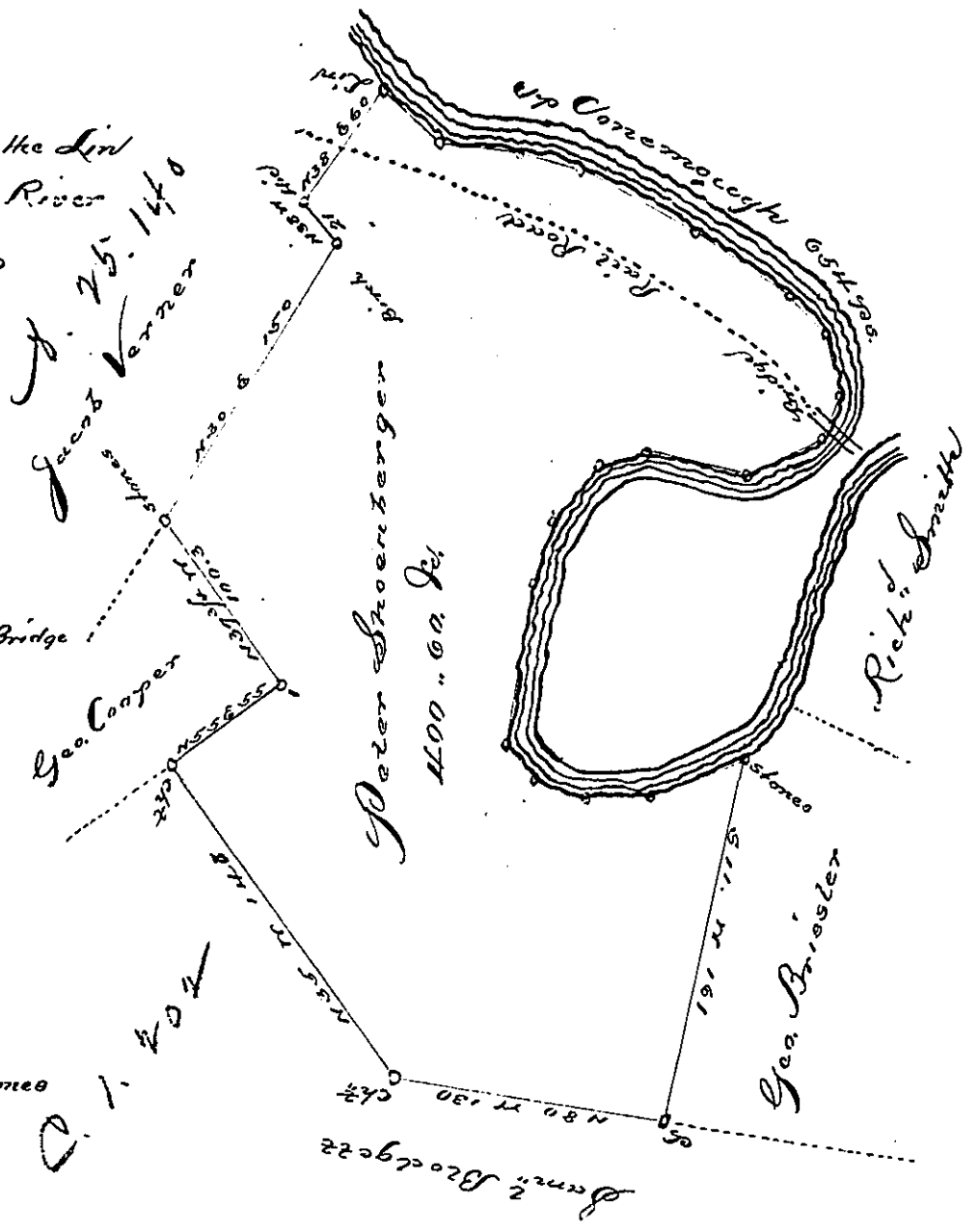


Courses from the Lin  
Up Conemaugh River

to Stone heap

- S. 45. E. 30.
- S. 83. E. 40.
- S. 77. E. 28
- S. 62. E. 60.
- S. 57. E. 54.
- S. 43. E. 22.
- S. 9. E. 32.
- S. 32. N. 18. at Bridge
- S. 65. N. 40.
- N 71. N. 46.
- S 75. N. 22.
- S. 40 N. 34.
- S. 22. N. 30.
- S. 11. N. 72
- S. 42. E. 20.
- S. 72. E. 26.
- East 30.
- N. 67. E. 48 stones

654



Situate on the South side of Conemaugh River opposite the Big bend Conemaugh Township Cambria County. Surveyed the 3<sup>d</sup> & 4<sup>th</sup> Jan'y. 1831 in pursuance of a warrant dated Nov<sup>r</sup> 29<sup>th</sup>. 1830. Cont<sup>d</sup> 9. 400 ft. 60 yds. & Allowed of by act

by Wm O'Keefe D.S.

Jacob Spangler Esq<sup>r</sup>  
Surveyor Gen<sup>l</sup>

IN TESTIMONY that the above is a copy of the original remaining on file in the Department of Internal Affairs of Pennsylvania, made conformably to an Act of Assembly approved the 16th day of February, 1833, I have hereunto set my Hand and caused the Seal of said Department to be affixed at Harrisburg, this

seventh day of April 1896

James W. Latta  
Secretary of Internal Affairs.